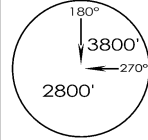


(2-2)

VIJO JODHPUR IAF JODHPUR, INDIA
07 SEP 22 Eff 13 JUL 24 VOR Y RWY 05

JODHPUR Tower 122.4, VC		JODHPUR Approach 121.8, UC	ATIS 116.2
VOR JDP 116.2	FINAL Apch Crs 043°	MDA (H) 1360' (648')	Apt Elev 712' RWY 706'



MISSED APCH: Climb straight ahead to 1500', then climbing turn LEFT to join VOR hold at 3800' or as directed by ATC.

Alt Set: hPa | Rwy Elev: 25 hPa | Trans level: By ATC | Trans alt: 4000'

- Max IAS during O/B restricted to 220 Kts.

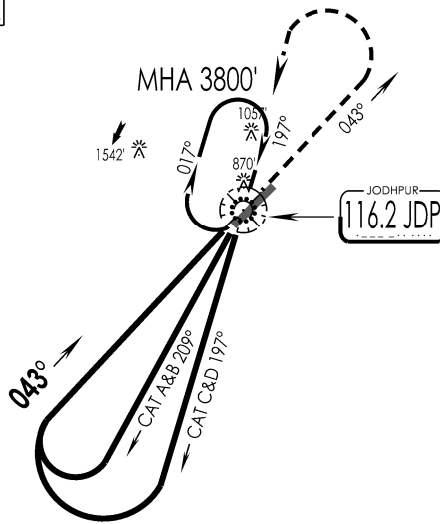
CAUTION
FAD19 in close proximity.
Minimum Safety Altitude 3800'.

1 Inch = 5.0 NM

5.0 NM

0

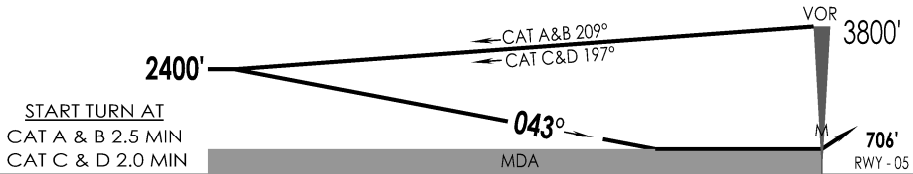
5.0 NM



SURVEY PERIOD : 2021 - 22

1060' *

991' *



START TURN AT
CAT A & B 2.5 MIN
CAT C & D 2.0 MIN

		CAT-II PAPI-R	↑ 1500'	3800' LT
MAP AT VOR		STRAIGHT-IN LANDING RWY 05		
non-CDFA		CIRCLE - TO - LAND		
MDA(H)		1360' (648')		
	IALS	ALS OUT	Max Kts	MDA (H) VIS
A	RVR 2800m	RVR 3200m	100	1480' (768') 3800m
B			135	
C	RVR 3000m	RVR 3400m	180	1940' (1228') 5000m
D			205	

CHANGES : NEW PROCEDURE

IPDC, DTE OF OPS (T & H)